



**WHERE EFFICIENCY
MEETS FREEDOM**

**GRIDLESS
PRODUCTS LINEUP**



GRIDLESS SINGLE ZONE HEAT PUMP - PRO HEAT

GRIDLESS SINGLE ZONE HEAT PUMP - HYPER HEAT

+1 855-884-4743 (GRID) support@gridlesslife.com

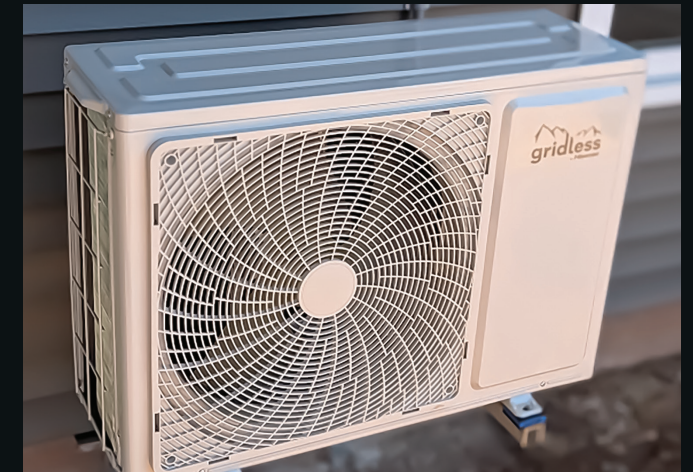
BENEFITS OF HEAT PUMPS

- NEEP Listed and Certified to CEE Performance as a Cold Climate Heat Pump in multiple configurations.
- Up to 100% Rated Heating Capacity to -15°C/5°F
- 100% Cooling Capacity at 40°C/104°F
- Base Pan Electric Heater & Crankcase Heater installed for stable operation in extreme conditions.
- R454B EPA Low-GWP Refrigerant with built in A2L Safety Sensor to ensure safety for both homeowners and technicians.
- Outdoor Intelligent defrosting technology improves system efficiency and reliable operation.



BENEFITS OF HEAT PUMPS

- NEEP Listed and Certified to CEE Performance as a Cold Climate Heat Pump in multiple configurations.
- Up to 100% Rated Heating Capacity to -25°C/-13°F
- 100% Cooling Capacity at 40°C/104°F
- Integrated Wi-Fi including the ConnectLife smart app with Alexa or Google Assistant.
- Base Pan Electric Heater & Crankcase Heater installed for stable operation in extreme conditions.
- Long-distance airflow (up to 50ft/15m) for comfort across larger spaces



Pro Heat Single Zone 9K Ductless Mini-Split Heat Pump GRID09WHV - GRID09OHV

25 SEER2 / 13.75 EER2
11 HSPF2

Dimensions WxDxH:
Outdoor Unit
34.4" X 12.2" X 23"

Indoor Unit
33.04375" X 8.0625" X 11.5625"



Hyper Heat Single Zone 9K Ductless Mini-Split Heat Pump GRID09WHHV - GRID09OHHV

32 SEER2 / 18 EER2 / 11.8 HSPF2

Dimensions WxDxH:
Outdoor Unit
36.8" X 13.4" X 25.6"
Indoor Unit
42.0625" X 9.0625" X 12.625"

Pro Heat Single Zone 12K Ductless Mini-Split Heat Pump GRID12WHV - GRID12OHV

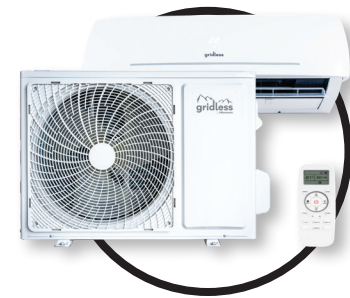
Dimensions WxDxH:
Outdoor Unit
34.4" X 12.2" X 23"

Indoor Unit
33.04375" X 8.0625"
X 11.5625"

Pro Heat Single Zone 18K Ductless Mini-Split Heat Pump GRID18WHV - GRID18OHV

Dimensions WxDxH:
Outdoor Unit
36.8" X 13.4" X 25.6"

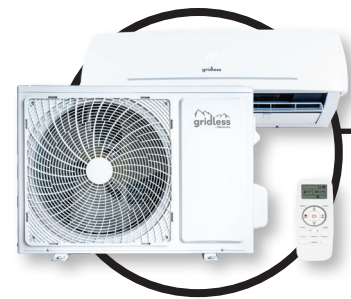
Indoor Unit
42.0625" X 9.0625"
X 12.5625"



Hyper Heat Single Zone 12K Mini-Split Heat Pump GRID12WHHV - GRID12OHHV

30 SEER2 / 15 EER2 / 11.8 HSPF2

Dimensions WxDxH:
Outdoor Unit
36.8" X 13.4" X 25.6"
Indoor Unit
42.0625" X 9.0625" X 12.625"



Pro Heat Single Zone 24K Ductless Mini-Split Heat Pump GRID24WHV - GRID24OHV

22.5 SEER2 / 12.25
EER2 / 9.5 HSPF2

Dimensions WxDxH:
Outdoor Unit
38" X 14" X 30"

Indoor Unit
42.0625" X 9.0625" X 12.625"



Hyper Heat Single Zone 15K Mini-Split Heat Pump GRID15WHHV - GRID15OHHV

25.6 SEER2 / 13.65 EER2 / 11.1 HSPF2

Dimensions WxDxH:
Outdoor Unit
36.8" X 13.4" X 25.6"
Indoor Unit
42.0625" X 9.0625" X 12.625"



GRIDLESS CENTRAL DUCTED HEAT PUMP

GRIDLESS MULTI ZONE HEAT PUMP

+1 855-884-4743 (GRID) support@gridlesslife.com

BENEFITS OF CENTRAL DUCTED HEAT PUMPS

- R454B Refrigerant System - EPA Low GWP compliant product compact side discharge condensing unit with multi - position air handler.
- Connect to all 24V thermostats (Nest, Ecobee, Honeywell) or Hisense Smart Thermostat with no adapter required.
- Achieve up to 100% capacity at 43°C/110°F (with a standard maximum operating range of 50°C/122 °F).
- Guaranteed heating operation to as low as -25°C/-13°F outdoor operating range.
- Tested and Rated to AHRI 210/240-2023.
- Quiet Operation: As Low as 54dB on ODU.
- Optional Hisense 24V Thermostat
- Base Pan Electric Heater built in.
- Up to 0.8" WC Maximum ESP.
- Anti corrosion heat exchangers for extended life and increase performance.

BENEFITS OF MULTI ZONE HEAT PUMPS

- NEEP Listed and Certified to CEE Performance as a Cold Climate Heat Pump in multiple configurations.
- Hisense Extreme Heat -100% of 8.3°C/47°F Rated Capacity available at -15°C/5°F.
- Tested and Rated to AHRI 210/240-2023.
- Free ConnectLife smart phone control APP for both iOS and Android.
- Intelligent defrost with outdoor condenser base pan electric heater.
- Optional wired room controller.



24K Central Ducted Heat Pump GRID240C-GRID24VAH

20 SEER2 / 12 EER2
Dimensions WxDxH:
Outdoor Unit
35.875" X 15.6875" X 29.5"
Indoor Unit
19.625" X 21.625" X 46"



36K Central Ducted Heat Pump GRID360C-GRID36VAH

19.5 SEER2 / 11.7 EER2
Dimensions WxDxH:
Outdoor Unit
43.25" X 20.25" X 34.625"
Indoor Unit
42.0625" X 9.0625" X 12.625"



Multi Zone 18K Mini-Split Heat Pump GRID180M2

22 SEER2 / 13.2 EER2 / 8 HSPF2
Dimensions WxDxH:
Outdoor Unit
33.875" X 14.5" X 26.375"
Indoor Unit
9-12K: 33 7/16 x 11 9/16 x 8 1/16
18-24K: 42 1/16 x 12 5/8 x 9 1/16



Multi Zone 24K Mini-Split Heat Pump GRID240M3

23 SEER2 / 12.9 EER2 / 7.7 HSPF2
Dimensions WxDxH:
Outdoor Unit
38.875" X 16.75" X 32.875"
Indoor Unit
9-12K: 33 7/16 x 11 9/16 x 8 1/16
18-24K: 42 1/16 x 12 5/8 x 9 1/16



48K Central Ducted Heat Pump GRID48VAH GRID480AH

19 SEER2 / 12 EER2
Dimensions WxDxH:
Outdoor Unit
38.375" X 13" X 57.5"
Indoor Unit
42.0625" X 9.0625" X 12.625"



60K Central Ducted Heat Pump GRID60VAH GRID600AH

19 SEER2 / 11 EER2
Dimensions WxDxH:
Outdoor Unit
38.875" X 13" X 57.5"
Indoor Unit
42.0625" X 9.0625" X 12.625"



Multi Zone 36K Mini-Split Heat Pump GRID360M4

22 SEER2 / 12.9 EER2 / 7.8 HSPF2
Dimensions WxDxH:
Outdoor Unit
38.875" X 16.75" X 32.875"
Indoor Unit
9-12K: 33 7/16 x 11 9/16 x 8 1/16
18-24K: 42 1/16 x 12 5/8 x 9 1/16



Multi Zone 48K Mini-Split Heat Pump GRID480M5

22 SEER2 / 12 EER2 / 7.4 HSPF2
Dimensions WxDxH:
Outdoor Unit
38.875" X 16.75" X 32.875"
Indoor Unit
9-12K: 33 7/16 x 11 9/16 x 8 1/16
18-24K: 42 1/16 x 12 5/8 x 9 1/16



GRIDLESS - LINE SET COVER SYSTEM

GRIDLESS - LINE SET COVER SYSTEM

+1 855-884-4743 (GRID) support@gridlesslife.com

PURPOSE-BUILT FOR QUALITY INSTALLATIONS

The GridlessLine™- Line Set Cover System is engineered to protect and conceal HVAC line sets, drain lines, and control cables where in-wall routing is not possible. Ideal for residential and light commercial applications, it delivers a clean, professional finish that holds up to time and the elements.

KEY FEATURES

- Tight tolerance fit for GridlessLine™ channel
- Mounts cleanly with stainless steel hardware (included)

WHY CHOOSE GRIDLESS

- Purpose-Sized: 3" profile fits standard HVAC line sets
- UV-Resistant: Maintains structure and color over years of exposure
- Clean Finish: Tight-fitting accessories for a smooth, low-profile install
- Contractor-Friendly: Lightweight, durable, and easy to cut and mount
- Paintable Surface: Compatible with 100% acrylic latex paints that have a Light Reflectance Value of 55 or higher.

- UV-stabilized natural finish
- Designed for smooth transition through siding, brick, or drywall



Gridless
Gridless-0001-O/W
3" Wall Pen Cap Assembly



Gridless
Gridless-0002-O/W
3" Flat 90 Assembly



Gridless
Gridless-0003-O/W
3" Long Bend 90 Assembly



MADE IN CANADA



Gridless
Gridless-0004-O/W
3" Flat 45 Assembly



Gridless
Gridless-0005-O/W
3" Inside 90 Assembly



Gridless
Gridless-0006-O/W
3" Outside 90 Assembly



Gridless
Gridless-0007-O/W
3" Coupling Assembly



Gridless
Gridless-0008-O/W
3" Flex Joint



Gridless
Gridless-0011-O/W
3" ADJ Flat 45-90 Assembly



Gridless
Gridless-0012-O/W
3" - 7 1/2" Channel Assembly



Gridless
Gridless-0016-O/W
3" Soffit Fitting Assembly



GRIDLESS HEAT PUMP STANDS & BRACKETS

GRIDLESS HEAT PUMP STANDS & BRACKETS

+1 855-884-4743 (GRID) support@gridlesslife.com

BENEFITS OF HEAT PUMP STANDS & BRACKETS

- **Protection from Ground Elements:** Elevating the heat pump on a wall bracket or stand keeps it off the ground, protecting it from dirt, debris, snow, ice, and flooding. This reduces the risk of corrosion or damage to the unit.
- **Improved Airflow:** Mounting the unit on a wall or stand ensures better airflow around the heat pump, which is critical for efficient operation.
- **Reduced Vibration and Noise:** A sturdy wall bracket or stand can minimize vibrations, which may reduce wear on the unit and lower noise levels.
- **Easier Maintenance:** Elevated units are more accessible for cleaning, inspections, and repairs.
- **Enhanced Longevity:** By protecting the unit from environmental hazards and ensuring proper airflow, a bracket or stand can extend the lifespan of the heat pump, reducing repair costs over time.
- **Aesthetic Appeal:** Wall-mounted units or those on neat stands can look tidier and blend better with the property's exterior compared to ground-level installations surrounded by clutter.

CONSIDERATIONS

- **Wall Brackets:** Best for saving ground space and offering high elevation
- **Stands:** Provide a stable base, often easier to install, and are suitable for areas with less wall support.



MADE IN CANADA

WALL BRACKETS



**Large Offset Bracket
OFFSET2626**

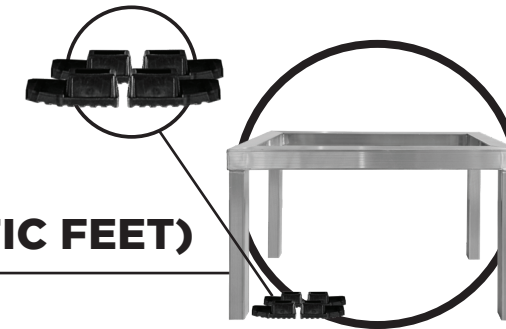
Maximum Load Rating:
350 lbs.
Dimensions:
26.75" X 26"



**Small Offset Bracket
OFFSET2122**

Maximum Load Rating:
300 lbs.
Dimensions:
21" X 22"

GROUND STANDS (OPTIONAL PLASTIC FEET)



**Universal Non-Welded
STAND2816U**

Maximum Load Rating:
350 lbs.
Dimensions WxDxH:
28" X 16.5" X 16.5"

**X-Large Non-Welded
STAND2821**

Maximum Load Rating:
350 lbs.
Dimensions WxDxH:
28" X 21" X 16.5"

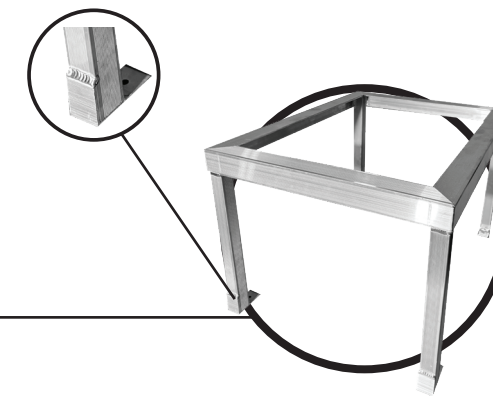
**Large Non-Welded
STAND2817**

Maximum Load Rating:
350 lbs.
Dimensions WxDxH:
28" X 17" X 16.5"

**Small Non-Welded
STAND2614**

Maximum Load Rating:
350 lbs.
Dimensions WxDxH:
26" X 14.25" X 16.5"

GROUND STANDS (WELDED FEET)



**Universal Welded Feet
WFSTAND2816U**

Maximum Load Rating:
350 lbs.
Dimensions WxDxH:
28" X 16.5" X 16.5"

**X-Large Welded Feet
WFSTAND2821**

Maximum Load Rating:
350 lbs.
Dimensions WxDxH:
28" X 21" X 16.5"

**Large Welded Feet
WFSTAND2817**

Maximum Load Rating:
350 lbs.
Dimensions WxDxH:
28" X 17" X 16.5"

**Small Welded Feet
WFSTAND2614**

Maximum Load Rating:
350 lbs.
Dimensions WxDxH:
26" X 14.25" X 16.5"



GRIDLESS HEAT PUMP SNOW COVERS

HEAT PUMP HOT WATER HEATER

+1 855-884-4743 (GRID) support@gridlesslife.com

BENEFITS OF HEAT PUMP SNOW COVERS

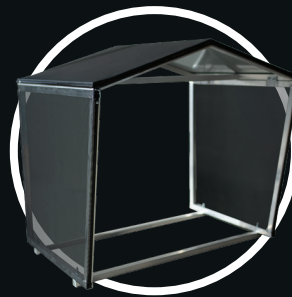
Protect your Heat Pump in harsh Canadian winters! Heat pump snow covers help prevent snow and ice buildup, reduce maintenance, and extend the life of your unit. This reduces the risk of corrosion or damage to the unit.

KEY FEATURES

- Improved Performance
- Less Downtime in Winter Storms
- Protect from Ice Damage & Blocked Airflow
- Durable & Weather-Resistant

HYBRID HEAT PUMP HOT WATER HEATER

- 50 & 80 Gallon capacity
- Net Home Plus App
- Extended Warranty to: 10 Parts and Labour
- Multiple Modes Available: Vacation, Hybrid, E-Heater, Economy, Heatpump
- A Heat pump water heater is an investment in long-term savings and sustainability.



Small Heat Pump Snow Cover SCS382828

Fits a Maximum Size of
30" Wide and 28" High
Dimensions WxDxH:
38" X 28" X 28"

Large Heat Pump Snow Cover SCL463428

Fits a Maximum Size of
38" Wide and 32" High
Dimensions WxDxH:
46" X 34" X 28"

X-Large Heat Pump Snow Cover SCXL464428

Fits a Maximum Size of
30" Wide and 42" High
Dimensions WxDxH:
46" X 44" X 28"



50 & 80 Gallon Capacity Heat Pump Hot Water Heater

Up to 4x More Energy Efficient
Environmentally Friendly
Uses up to 70% Less Electricity Than
Traditional Electric Water Heaters



MADE IN CANADA

