



CASE STUDY

# ENQORE DEVELOPMENTS



**Business Name:**

Enquire Developments - Nova Scotia Health Authority

**Location:**

411 Highway 214, Elmsdale

**Square feet:**

7000 SQFT

**Building Details:**

NS Health - Out-Patient Care Facility

**Challenges:**

10 days to rough-in 11 fan coils, 2 branch boxes, control wiring, and 2x 1200 cfm ERV's

**Equipment Installed:**

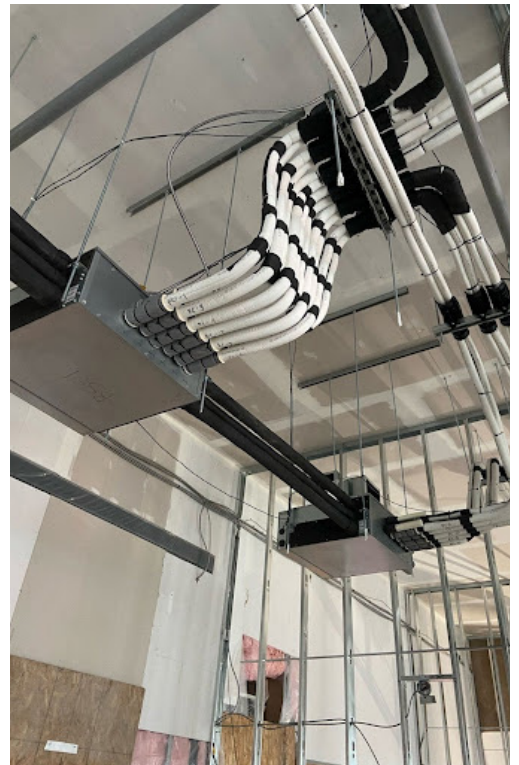
2x 6ton Daikin VRF systems w/ 11 Fan Coils + 2 ERV's

**Result:**

Rough-in completed.



©2024 Greenfoot Energy Solutions. All rights reserved.



©2024 Greenfoot Energy Solutions. All rights reserved.